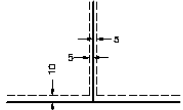
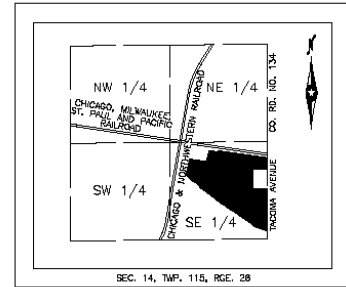


TACOMA WEST INDUSTRIAL PARK & TACOMA WEST INDUSTRIAL PARK 2ND ADDITION

DRAINAGE & UTILITY EASEMENTS ARE SHOWN THUS:



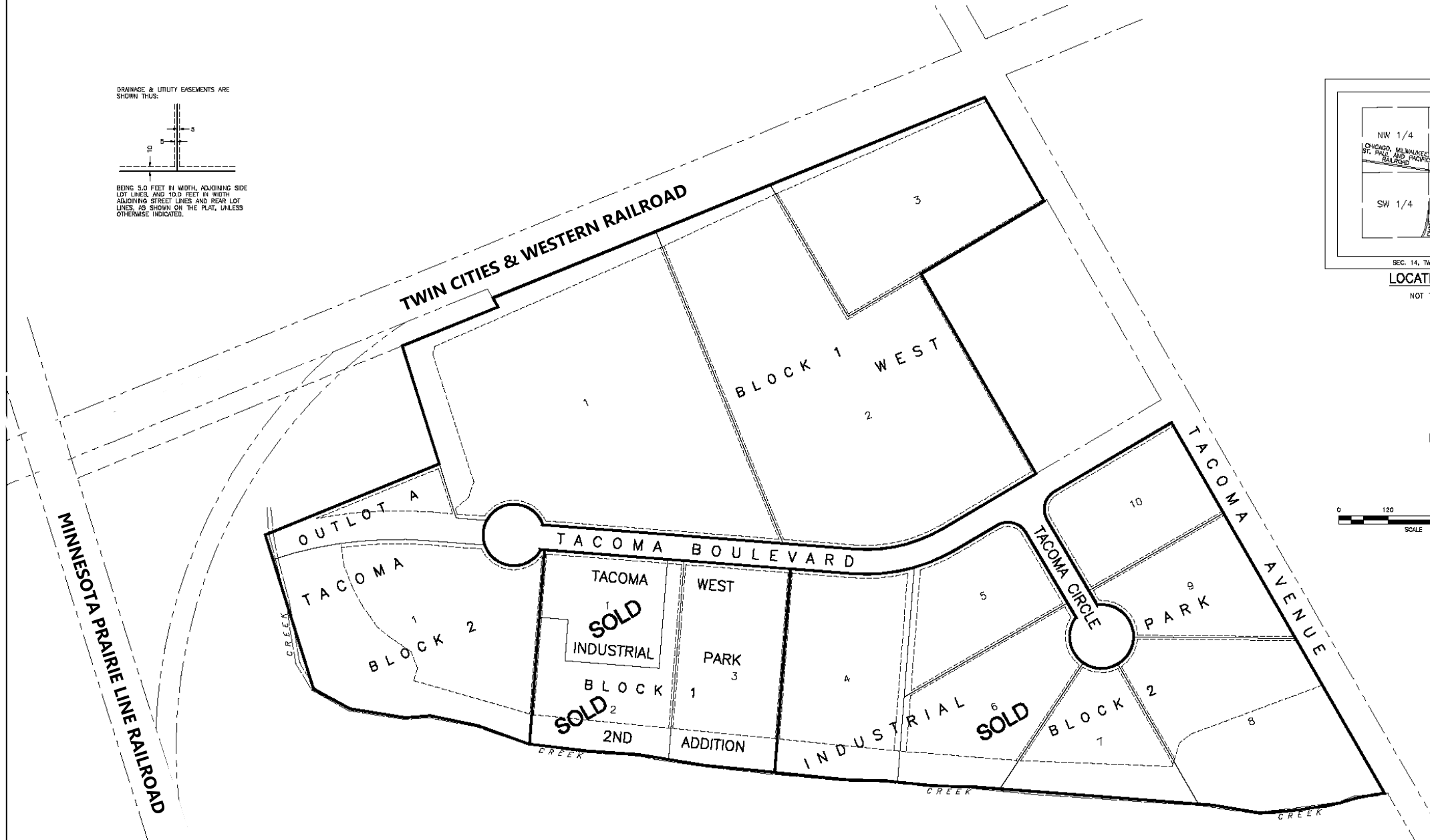
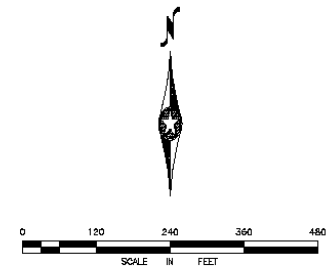
BEING 5.0 FEET IN WIDTH, ADJOINING SIDE LOT LINES, AND 10.0 FEET IN WIDTH ADJOINING STREET LINES AND REAR LOT LINES, AS SHOWN ON THE PLAT, UNLESS OTHERWISE INDICATED.



SEC. 14, TWP. 115, RGE. 28

LOCATION MAP

NOT TO SCALE



COMPOSITE MAP NORWOOD YOUNG AMERICA, MN BOLTON & MENK, INC. Consulting Engineers & Surveyors 2838 SHELDON LANE, SUITE 200, CHASKA, MN 55318 (952) 448-8838 MANKATO, FAIRMONT, SLEEPY EYE, BURNSVILLE, WILLMAR, CHASKA, RAMSEY, MAPLEWOOD, BAYTER, MINNESOTA & AMES, IOWA		TACOMA WEST INDUSTRIAL PARK & TACOMA WEST INDUSTRIAL PARK 2ND ADDITION FOR: CITY OF NORWOOD YOUNG AMERICA
---	--	---